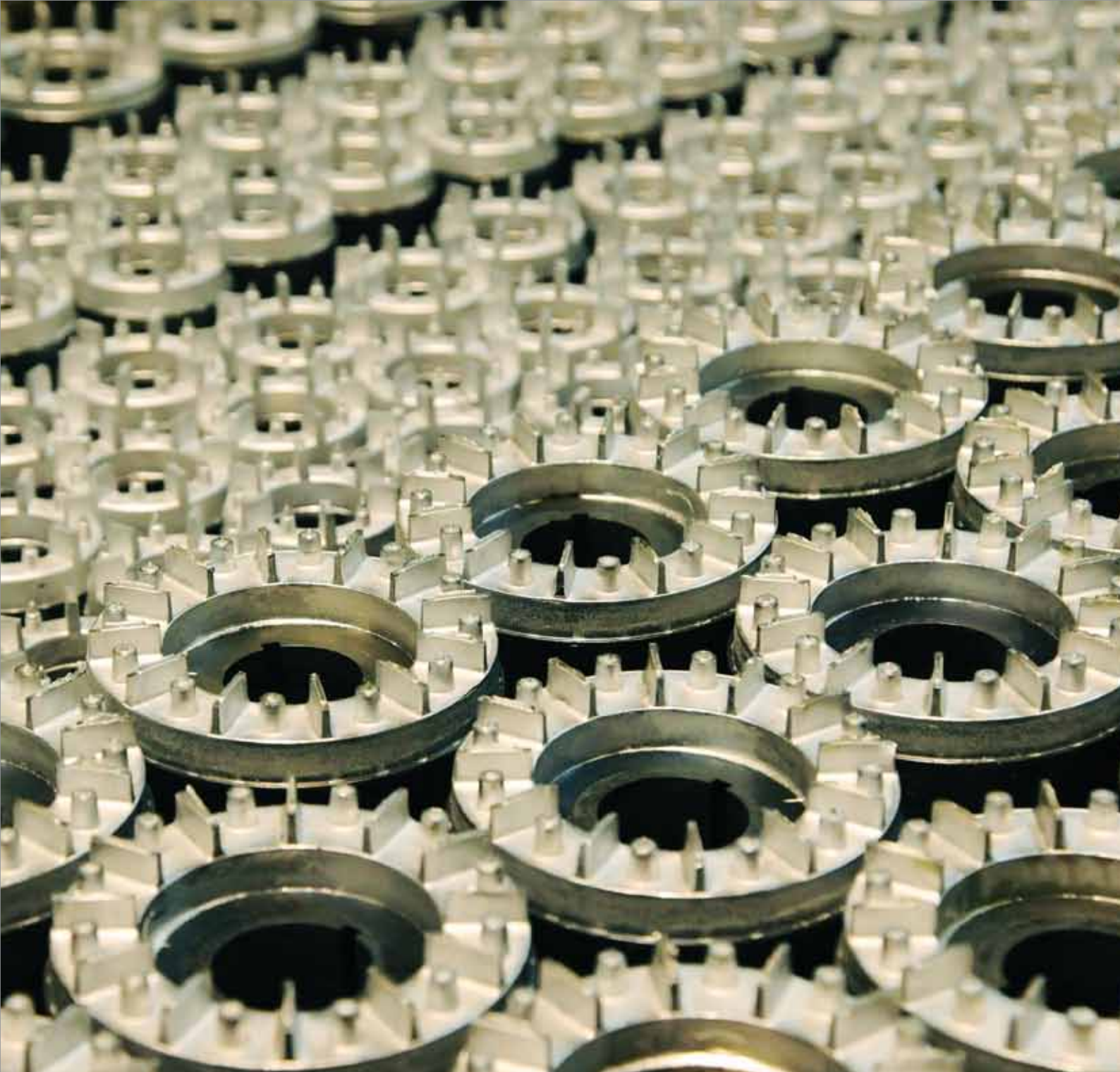


**Electrical Stampings and Lamination**





## Expertise, From Experience

Kapil Corepacks (KCP) specialises in producing electrical stampings and lamination; it is located in the prestigious Industrial town of Manesar – Gurgaon. The professional management, with more than 30 years of experience and focus on providing customised solutions for client satisfaction, has driven KCP to the forefront of the Indian electrical stamping industry. The company, acclaimed for providing electrical stampings and lamination for motors, pumps, fans, alternators and other electrical rotating machines with a higher degree of precision, has built an image of reliability, commitment and versatility. An extensive variation of machinery and equipment along with synchronised workflow has ensured stringent quality production regimes to cater to a satisfied clientele



Our aim is to become one of the leading contributors of precision metal components to the global electrical industry. Adding value to the motor and transformer industry through the highest level of quality achieved with smarter optimisation of resources, leveraged through a strong association with our global vendor base.







**Effective Infrastructure To Meet Every Specification**



**Consistent Tooling Support**



With an installed capacity to manufacture more than 7500 tonnes per year, KCP can produce a wide range of laminations ranging from Ø 50mm to 1200mm on progressive, gang punching as well as single point notching. The experienced and well-qualified workforce duly shares the credit of achieving a phenomenal degree of precision.





## Additional Capabilities



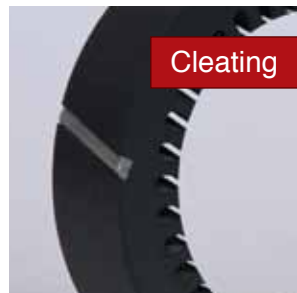
Die Casting



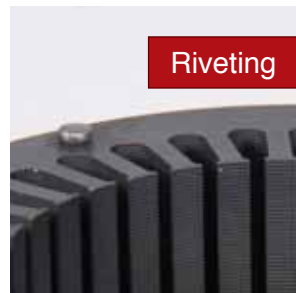
Annealing



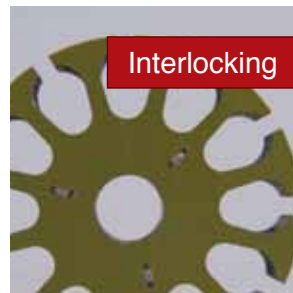
Welding



Cleating



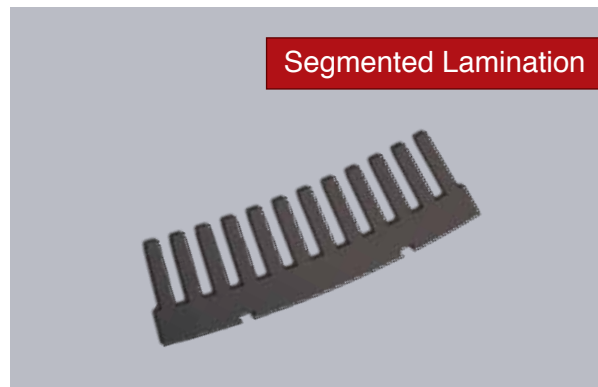
Riveting



Interlocking



Single Notching



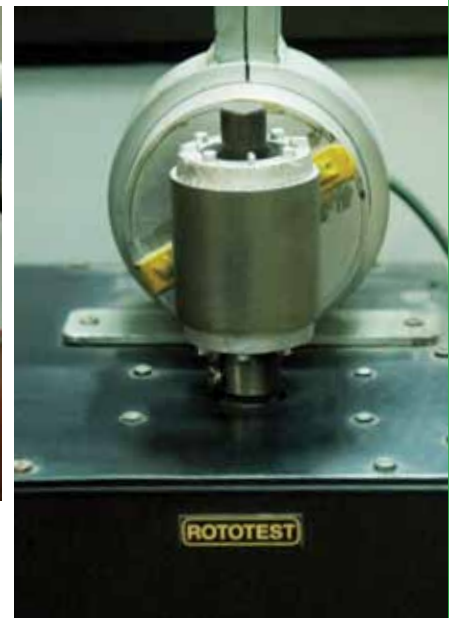
Segmented Lamination

## Global Sourcing

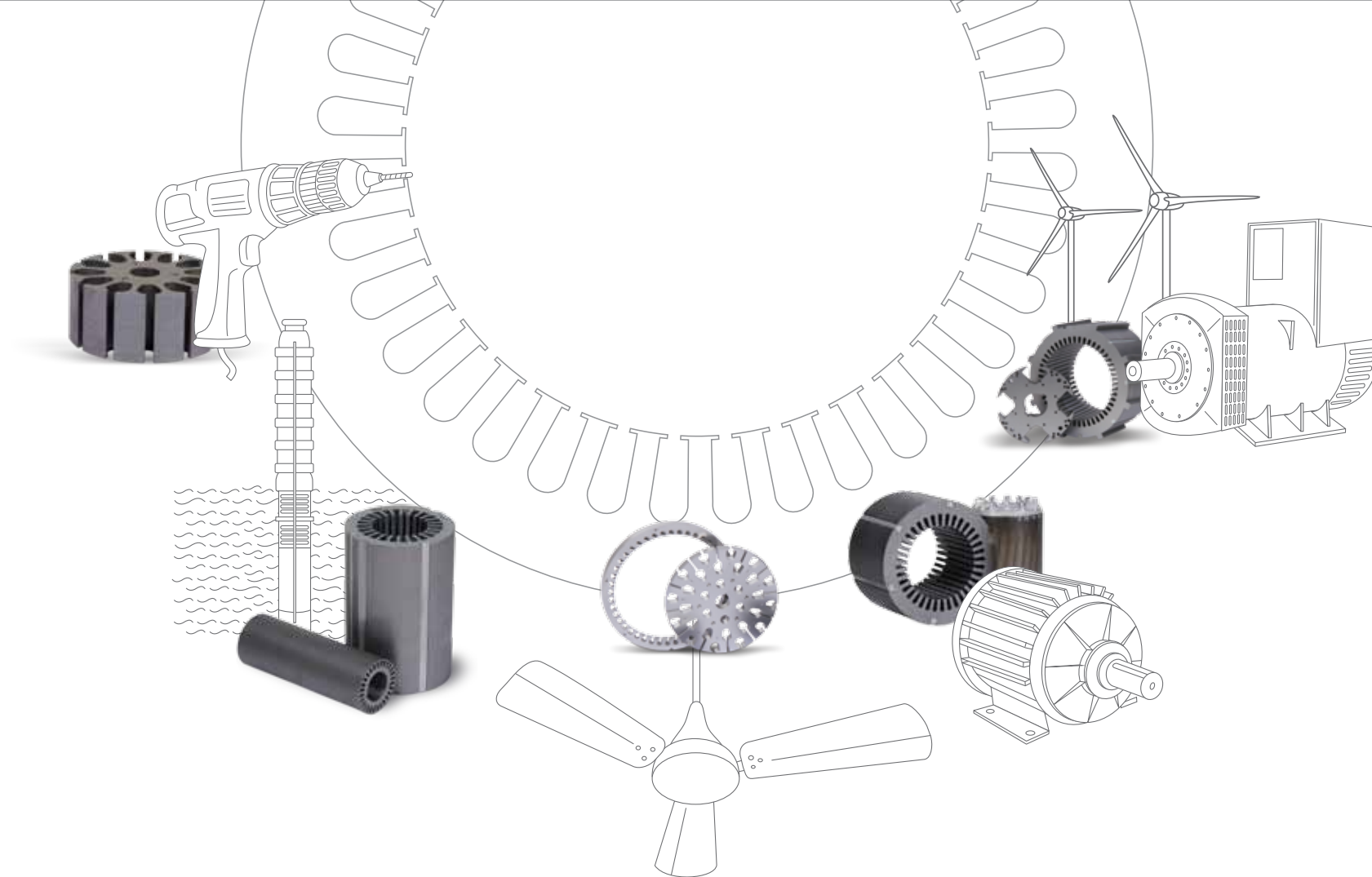
With long associations and experience, KCP has developed a global vendor base for sourcing of the most varied proportions of electrical steel to facilitate the requirement of an expansive customer base.



**Greater Control,  
Driving Unparalleled Quality**



The stringent quality control measures complemented by a host of QC equipment ensure that each piece reflects the highest standards of quality that KCP stands for. KCP has in the past, and shall continue to set benchmarks for the industry to promptly deliver high value products. Our testing department is equipped with; core loss tester, growler tester, rotor analyzer, electrical conductivity tester, Coating tester and hardness tester.



**KCP**  
KAPILCOREPACKS

**Kapil Corepacks Pvt. Ltd** (ISO 9001:2008 Certified Company)

320 Sector – 7, Phase II, IMT Manesar,

Gurgaon 122050, Haryana, India

T +91 124 4030239, F +91 124 4030240

E: [info@kapilcorepacks.com](mailto:info@kapilcorepacks.com),

W: [kapilcorepacks.com](http://kapilcorepacks.com)

